



Take off 2026

**Concertina**

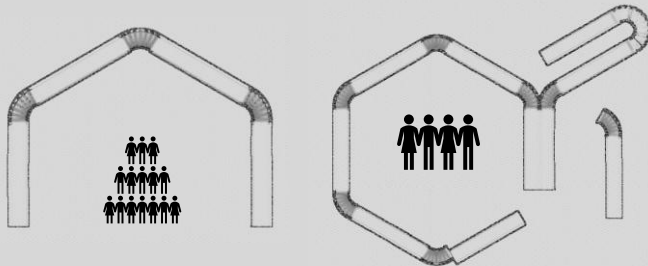
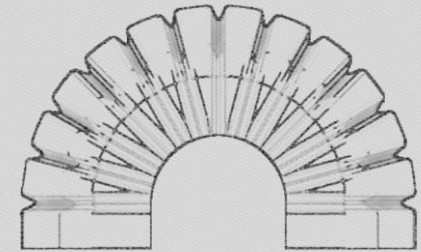
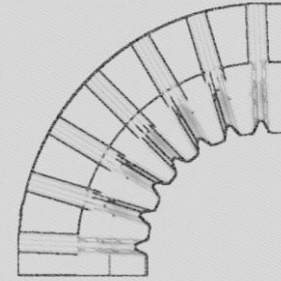
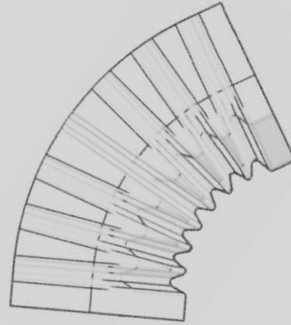
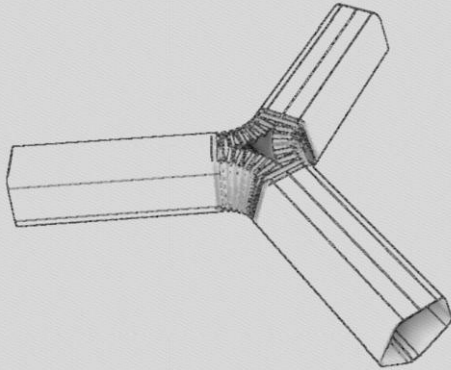
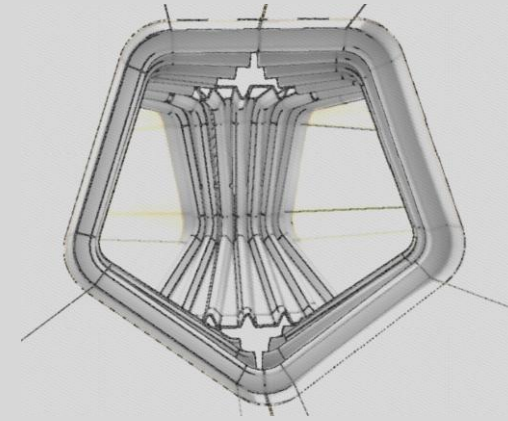
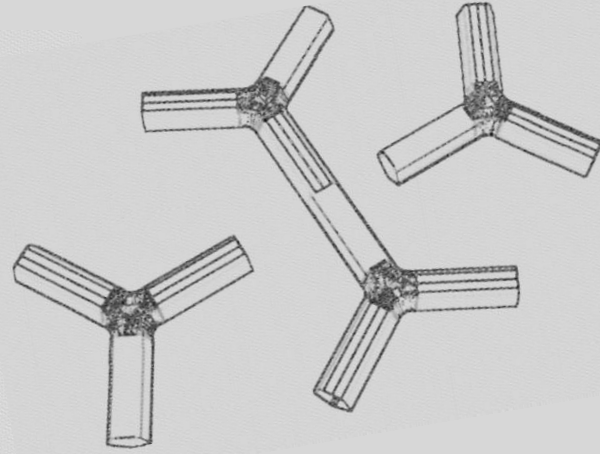
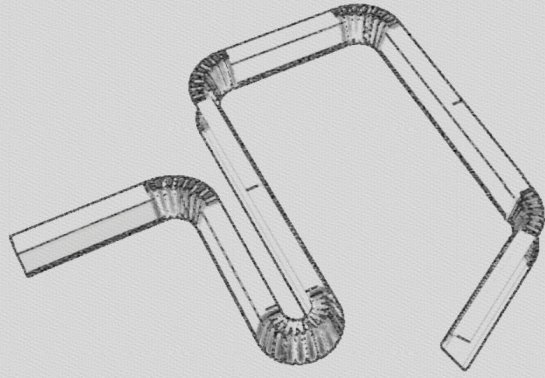




## Furniture Inspired by Transport, built to Move, Used to Control

Inspired by the Jetway bridge, the Concertina collection brings future flexibility to airport interiors. Each module connects through a manoeuvrable concertina corner system, enabling endless configurations from a single modular design. Crafted from folded stainless steel in precise pentagon forms, Concertina delivers ultra-modern seating that echoes the timeless geometry and industrial elegance of retro metro designs.





The uncertainty of travel — the fear of not knowing where you're going, sudden gate cancellations, concertina introduces control and adaptability. Integrated LED screens help guide passenger flow, while modular furniture can be repositioned to manage peak demands. The concertina corner joint, made from recycled rubber, ensures durable movement and long-term flexibility.



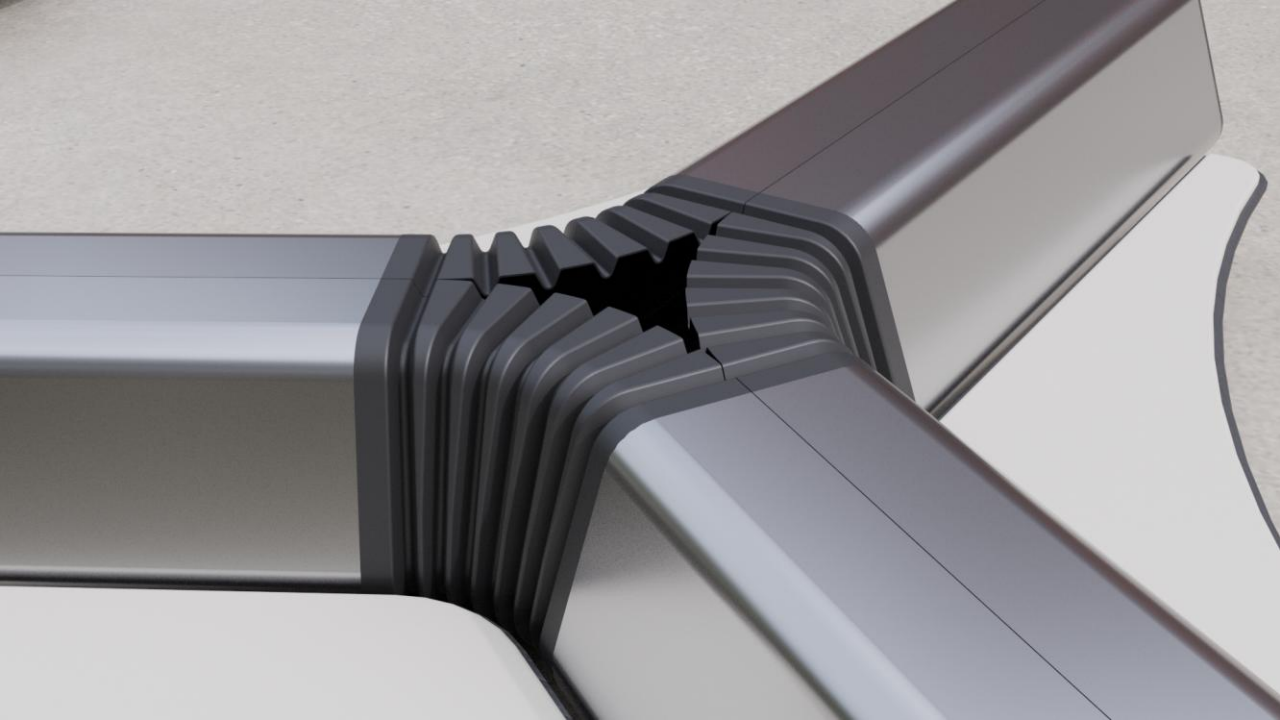




# Parked planes

An efficient aviation style of parking furniture





# Concertina

- Concertina comes with 2 x folded stainless steel sections connected back-to-back in 1,2 or 3 metre lengths
- Corner joint systems come as fixed internal 60, internal 90, external 180-degree recycled rubber corner joints
- Flexible corner joint systems for up to 270-degree manoeuvres
- Arc lounge seating or bolt on individual seats
- Efficiently packed inside freight box 1.2metres wide by linear length chosen
- End inserts to allow fitted screens

